

Acoustic Bass

Blind Man, Blind Man

Herbie Hancock

Intro

♩ = 130
Bb9

Faug



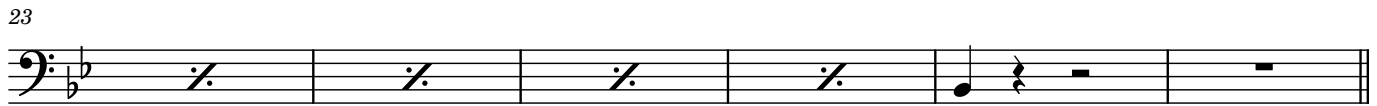
A1

9 Bb9

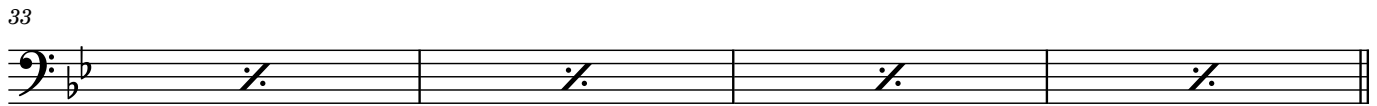
Faug



A2



A3



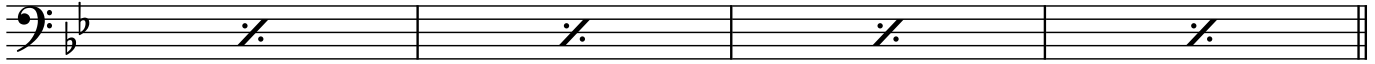
A4



2

41

To Coda



Solos: sax, trumpet, piano

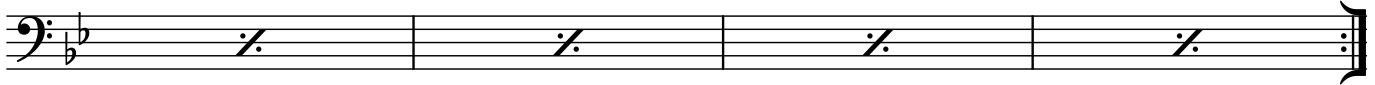
45

Bb9

Faug



49



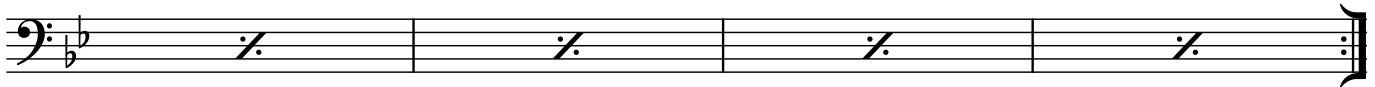
Background for end of each solo

53



57

D.S. al Coda



61



Repeat to fade

65

