

B♭ Trumpet

King Cobra

Herbie Hancock

♩=200 Fast Swing

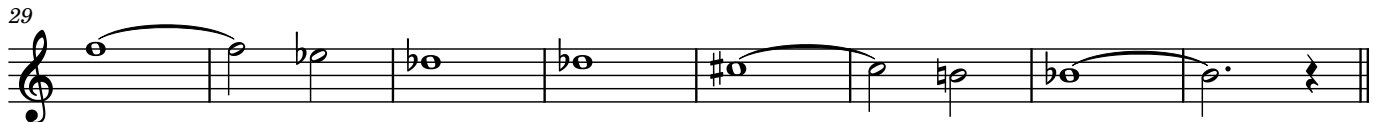
Intro



A1



A2



B



C



To Coda

2

Solos: trumpet, sax, piano

A1

65 $G7_{sus}$ $E^b\Delta^7/G$

69 A/G A^b/G G^-

73 $B^b\Delta^7/D$ $B\Delta^7/D$

77 $E^b\Delta^7$ $B^b\Delta^7$ B E

A2

81 $G7_{sus}$ $E^b\Delta^7/G$

85 A/G A^b/G G^-

89 $B^b\Delta^7/D$ $B\Delta^7/D$ $A\Delta^7/D$


93 $G\Delta^7/D$ $E^b-\Delta^7$

B


97 $C7^{\#11}$ $A7^{\#5}$ $F^{\#7^{\#11}}$ $E^b7^{\#9}$

101 C^o7


105 A-7 Eb-Δ7 Eb-7 BΔ7#11



109 D7b9



113 G-11




C

117 F#-11



121 D.S. al Coda



125 F#-11 **Drum solo to fade**

