

Bass

# Tribute To Someone

Herbie hancock/John Scott

♩ = 150

**Intro**

5

F13<sup>add4</sup> G<sup>b</sup>Δ7/F

(trumpet plays melody)



9 **A1** C-7 (walk in 2) F7 B<sup>b</sup>Δ7 E<sup>b</sup>7 D-7 G-7 G<sup>b</sup>7

13 F-7 B<sup>b</sup>7 E<sup>b</sup>Δ7

17 E<sup>b</sup>Δ7 A<sup>b</sup>7 D-9 G<sup>9</sup>

21 G-7 C7 A<sup>b</sup>-7 D<sup>b</sup>7

25 **A2** C-7 F7 B<sup>b</sup>Δ7 E<sup>b</sup>7 D-7 G-7 G<sup>b</sup>7

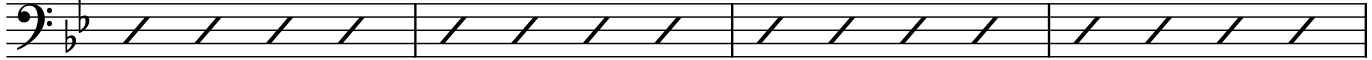
29 F-7 B<sup>b</sup>7 E<sup>b</sup>Δ7

33 E<sup>b</sup>Δ7 A<sup>b</sup>7 D-7 G<sup>9</sup>

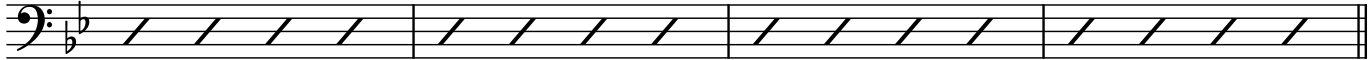
37 C-7/F G<sup>b</sup>Δ7/F

2 (sax plays melody)

41 **B** F-7 (walk in 4) Bb7 EbΔ7

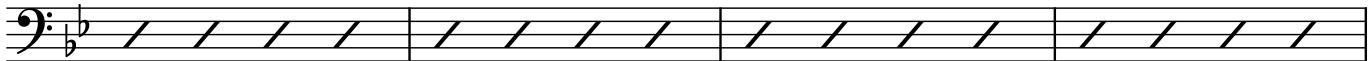


45 Eb-7 Ab7 DbΔ7 D-7 G7#9

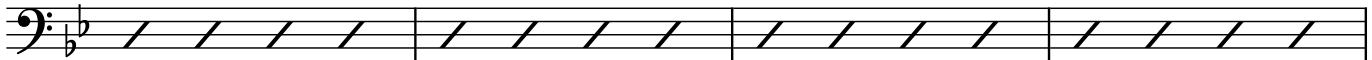


**A3** (trumpet plays melody)

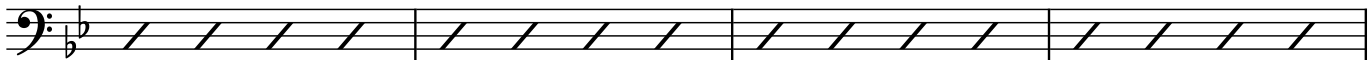
49 C-7 (walk in 2) F7 BbΔ7 Eb7 D-7 G-7 Gb7



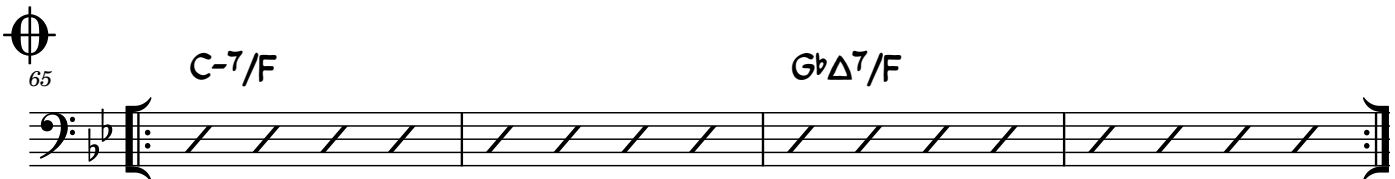
53 F-7 Bb7 EbΔ7



57 EbΔ7 Ab7 D-9 G9 To Coda



**Solos: trumpet, sax, piano, then D.S. al Coda**



69 GbΔ7/F Dissolve

