

Electric Bass

Sardegna

Pater Horvath

Intro

♩ = 95

GΔ7

C-11

GΔ7

E♭Δ7

D7sus

A1

9 GΔ7 F#13♭9 FΔ7 F#13♭9 E7#9

13 A13#11 C-9 D7alt GΔ7 C-11 D7alt

A2

17 GΔ7 F#13♭9 FΔ7 E7sus E7#9

21 E♭Δ9 A♭7#11 GΔ9 B7alt

B

25 CΔ7 C-9 E-7 D-9 G13 CΔ7

30 F#-11 B7alt E-7 B♭7#11 A7#11 G E♭7alt D7sus C-9

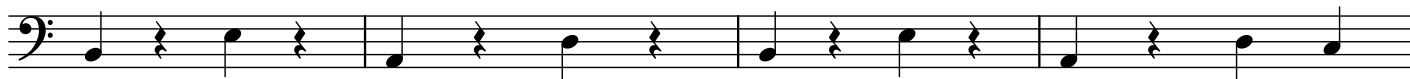
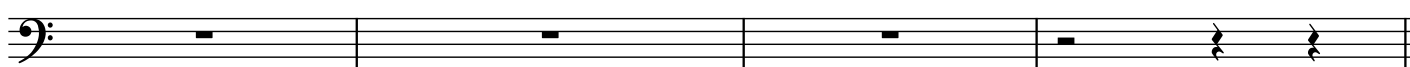
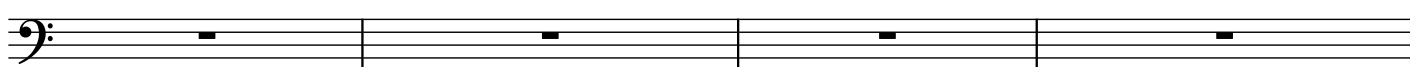
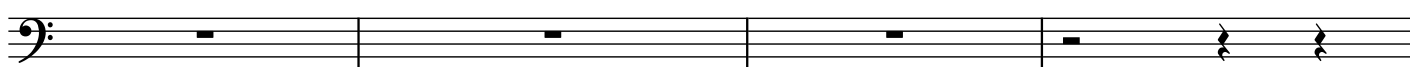
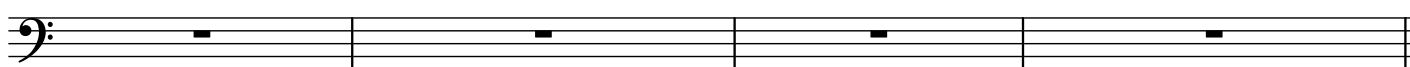
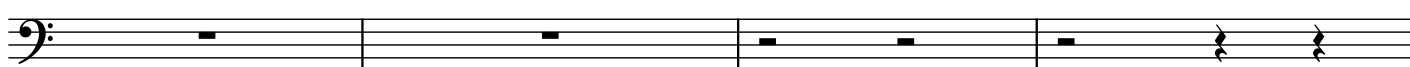
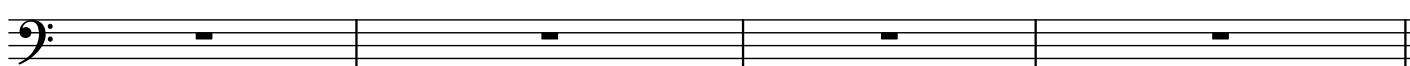
C1

33 B7sus E7alt A-7 D7 B7alt E7alt A7alt D7alt C-9

37 B7sus E7alt A-9 D7 C-6 B7sus B7alt E7alt A7sus A7alt C-9

C2

41 B7alt E-7 A7sus D7sus C-6 B7sus B7alt E7sus E7alt A7sus A7alt D7sus D7#5

E289 B7^{alt} E-⁹ A7^{sus} D7^{sus} C-⁹ B7^{alt} E7^{alt} A7^{sus} D7^{sus} C-⁹93 B7^{alt} E-⁹ A7^{sus} D7^{sus} C-⁹ B-⁹ E7^{sus} Bb1³ A-⁹ B-⁹ C-⁹ (F7)**E3**97 B7^{alt} E-⁹ A7^{sus} D7^{sus} C-⁹ B7^{alt} E7^{alt} A7^{alt} D7^{sus} C-⁹101 B7^{alt} E7^{alt} A7^{alt} D7^{sus} C-⁹ B7^{alt} E7^{alt} A-⁹ D7^{sus} C-⁹**E4**105 B7^{alt} E7^{alt} A-⁷ D7^{sus} C-⁹ B7^{alt} E7^{alt} A-⁷ D7^{sus} C-⁹109 B7^{alt} E7^{alt} A7^{alt} D7^{sus} C-⁹ B7^{alt} E7^{alt} A7^{alt} D7^{sus} C-⁹**E5**113 B7^{alt} E7^{alt} A7^{alt} D7^{sus} C-⁹ B7^{alt} E7^{alt} A-⁹ D7^{sus} C-⁹117 B7^{alt} E7^{alt} A7^{alt} D7^{sus} C-⁹ B7^{alt} E7^{alt} A7^{alt} D7^{sus} C-⁹**E6**121 B7^{alt} E7^{alt} A-⁷ D7^{sus} C-⁹ B7^{alt} E7^{alt} A-⁷ D7^{sus} C-⁹125 B7^{alt} E7^{alt} A7^{alt} D7^{sus} C-⁹ B7^{alt} E7^{alt} A-⁷ D7^{sus} C-⁹**Coda**129 B7^{alt} E7^{alt} A-⁷ D7^{sus} C-⁹ B7^{alt} E7^{alt} A-⁷ D7^{sus} C-⁹